



OVERVIEW OF MONITORING SOLUTIONS

 **FirstStep.ai**

PRODUCT BROCHURE
v2025.04

Product Summary

Predictive Analytics helps businesses predict equipment failures before they happen, providing up to **24-hour advance warnings** on performance issues. By identifying potential faults early, operations teams can prevent unplanned downtime, reduce costs, and keep production running smoothly.

Benefits

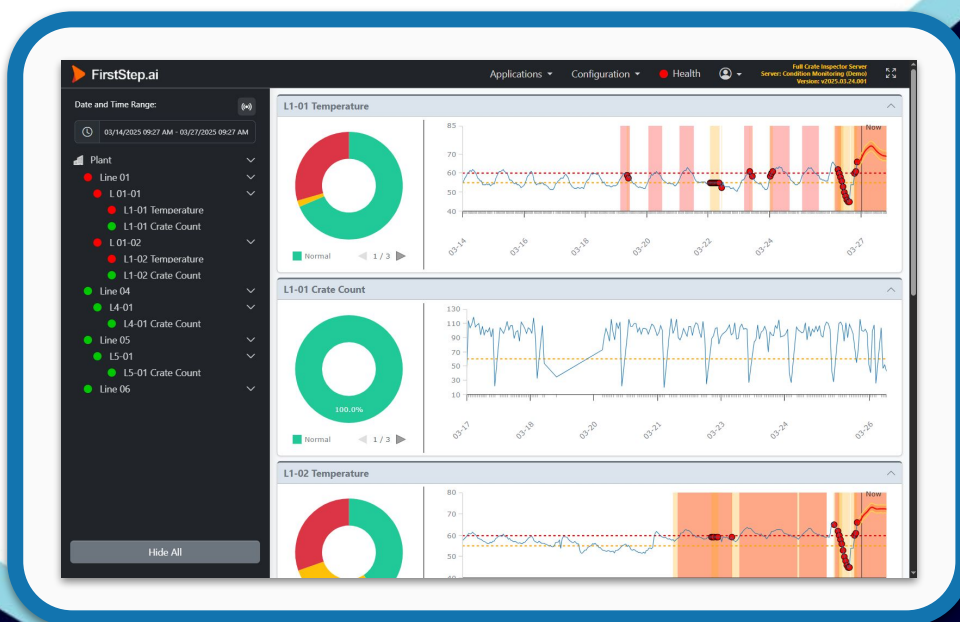
With **real-time monitoring and AI-driven predictions**, operators can take action before failures occur, avoiding costly breakdowns and improving efficiency. Running hourly on Windows Servers, the system continuously refines its accuracy by analysing historical data. Its lightweight, scalable design ensures seamless integration across different industrial environments.

Unique Selling Points

1. **Real-Time Monitoring:** Runs continuously on an on-premise server.
2. **Predictive Insights:** Detects potential failures up to 24 hours in advance using AI.
3. **Self-Improving AI Models:** AI models autonomously improve by analyzing historical performance data.
4. **Lightweight & Scalable:** Deployed on an on-premise virtual server without any additional hardware.

Key Features

1. **Real-time Tag Monitoring:** Continuous data acquisition and analysis from live data streams.
2. **24-Hour Time-to-Failure Forecasts:** Estimated time-to-failure to prioritize maintenance activities.
3. **Anomaly Detection:** Early identification of deviations from expected asset behavior.
4. **Visualization of Production Data:** Graphical representation of operational data for enhanced analysis.
5. **Limits & Alarms:** Configurable alerts and notifications for performance deviations.



Client Success Story

Client: Anheuser-Busch (AB InBev Southern Africa)

Challenge: Frequent errors in human quality inspections leading to inconsistent crate quality and internal disputes over delivery and raw material quality.

Solution: Implemented the FirstStep.ai FCI, ECI and Closed Loop Rejection.

Result: Eliminated the need for human quality inspections, strengthened brand association with quality, resolved internal disputes over delivery and raw material quality, and significantly enhanced operational efficiency.

Quotes from client:

- "Results are incredible"
- "Project payback period is looking like days, not years!"
- "No one has seen rejection done without [physical] sensors or triggers"



All Solution Categories



Production Intelligence

Optimise production with AI-driven quality control.



Monitoring Intelligence

Forecast and prevent downtime with AI-powered monitoring.



Safety Intelligence

Ensure safety across your plant with AI-enhanced monitoring.



Operations Intelligence

Streamline shift-based operations with AI assistance.

